

## ACCESSING POTENTIAL OF SEEDLING TRAITS FOR SCREENING OF WHEAT GENOTYPES UNDER DROUGHT CONDITIONS

Muhammad Omer Farooq \* and Muhammad Kashif

Department of Plant Breeding and Genetic, University of Agriculture, Faisalabad, Pakistan

\*Corresponding author: [momerfarooq327@gmail.com](mailto:momerfarooq327@gmail.com)

### ABSTRACT

Drought stress causes a considerable decrease in wheat yield, especially in developing countries like Pakistan. In the current study, seedling traits, i.e., root length, shoot length, shoot fresh weight, shoot dry weight, and selected root to shoot (length) ratio to find their effectiveness in evaluating drought tolerance of wheat genotypes. Different genotypes showed different responses under normal, and drought conditions as mean squares for genotypes were significant. When plants are exposed to stress, they try to overcome the stress by adopting different strategies like extending the root system to reach the deep soil water. An increase in stress causes a reduction in both root and shoot length. Genotypes named Faisalabad-08, Sehar-06, 9633, 9507, and Lasani-08 showed maximum and high root length under normal conditions, but their root length decreased significantly ( $P < 0.05$ ) when exposed to a drought environment. Because of their behavior, they have been tagged as drought susceptible genotypes. Genotypes Chakwal-86, Ass-11, Manthar-2003, Miraj 2008, Chakwal-50, 9488, 9805, 9859, 9512, and 9637 showed high values for root length under drought condition and while comparing their performance under both the environments, i.e., normal and drought, their root length decreased non-significantly. So, these genotypes are tagged as drought-tolerant genotypes.

**Keywords:** Drought, Stress, Seedling traits, Wheat

---

Article History (2020-1254) || Received: 01 Dec 2020 || Revised: 24 Jan 2021 || Accepted: 28 Jan 2021 || Published Online: 30 Apr 2021

©2021 ABR - All Rights Reserved

## 1. INTRODUCTION

Many biotic and abiotic stresses resentfully affect the crop yield (Farooq et al. 2011) and most prominent is drought which causes considerable decrease in wheat yield (Lambers et al. 2008; Datta et al. 2011; Saint Pierre et al. 2012; Noorka and Heslop-Harrison 2013) by reducing the production of crop (Aroca 2012). Drought causes misbalancing of nutrients and reduces efficiency of water usage (Rasool 2008; Li et al. 2009; Farooq et al. 2010; Ahmad et al. 2017) and results in the synthesis and accumulation of ABA (Abscisic acid). World population is increasing and 9 billion is expected until 2050 (FAO 2014) and expected demand for the world to feed will rise up to 40% by 2030 (Dixon et al. 2009). It's the need of time to find a suitable and economical solution which is to evaluate the available genetic variability in the wheat crop (Ahmed et al. 2020; Khadka et al. 2020a; Khadka et al. 2020b). Aim of the current study is to find genotypes that are tolerant to water deficit and have little effect of stress.

To estimate the expected yield of wheat, vigorous seedling is of great importance (Chowdhry et al. 1999; Misra et al. 2002; Noorka and Khaliq, 2007). Water deficit is a limiting factor that reduces germination (Misra 1990; Misra et al. 2002; Nezhadahmadi et al. 2013; Sallam et al. 2019). At early stage of development, root length, shoot length along with root shoot ratio have great importance for the evaluating the performance of genotypes under water deficit condition (Dhanda et al. 2004; Shahbazi et al. 2012; Wadzingeni et al. 2016). Different cultivars have different response towards water deficit (Aziz et al. 2011). Strategy to improve crop production under water deficit is to find genotypes that show good performance under these conditions (Rashidi and Seyfi 2007; Rajaram 2001; Waqas et al. 2013).

At early stages of seedling, the effective method for the selection is based upon seedling traits that offers reduction in labor and drop in expenses. In the current study, 150 wheat genotypes will be selected to evaluate their performance under normal and drought conditions at seedling and the relationship among the seedling traits.

## 2. MATERIALS AND METHODS

Germplasm of 150 *Triticum aestivum* genotypes was compiled from Regional Agricultural Research Institute (RARI) Bahawalpur, CIMMYT and University of Agriculture Faisalabad. These wheat genotypes were evaluated in two different environmental settings i.e., under normal and drought stressed condition in the controlled wire house of the Department of Plant Breeding and Genetics, University of Agriculture, Faisalabad (Pakistan), using

Complete Randomized Design (CRD) with three replications during the crop season 2014-2015. The polythene bags (18×9cm) were used in which seed were sown packed with sandy loam soil (pH 7.8 and E.C 1.7dSm-1). For each set of experiment, fifteen plants/genotype/replication were grown. After germination one seedling/one polythene bag was allowed. Plants under controlled condition (normal) were watered to preserve soil-water contents to the level of field capacity. In the stress (drought) experiment the irrigation was prohibited immediately after germination. Plants were harvested at three leave stage and cleaned carefully to remove soil from the seedlings and plants were kept in Kraft paper bags.

Data collection was maintained at standard level of proficiency for seedling traits i.e., root length, shoot length, shoot fresh weight, shoot dry weight and root to shoot (length) ratio. Compiled data was imperiled to analysis of variance (Steel et al. 1997) and simple correlation coefficients (Pearson 1920) were considered between the seedling traits and their significance was verified.

### 3. RESULTS AND DISCUSSION

Analysis of variance was applied on the obtained data and different sources of variances behaved differently. According to the analysis, genotypes were significantly different from each other at 1% significant level as square of means were highly significant.

Under the normal conditions i.e., control, all the genotypes behaved differently from each other. For root length, mean value obtained was 13.58cm with highest values recorded were 19.98, 19.24, 18.46, 18.04, 17.99 for Faisalabad-2008, lasani-08, sehar-06, Miraj 2008 ad 9507, respectively. While lowest values attained by 9438, 9193, GA-02 were 9.35, 9.5 and 10.05, respectively (Fig. 1a; 1b). Under drought stress, root length ranged from lowest ufaq-02 (5.251cm) to highest Chakwal-86 (17.87 cm). Under normal condition shoot length ranged between 17.101 to 33.502 for AS-02 and Faisalabad-08, respectively while genotypes showed different performance by decreasing under drought stress and ranged 11.161 cm to 30.256cm for lasani-08 and Chakwal-86, respectively (Fig. 2a; 2b).

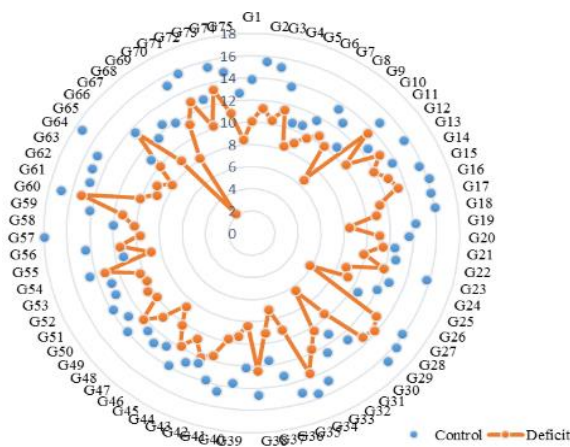


Fig. 1a: Root length of wheat genotypes 1-75.

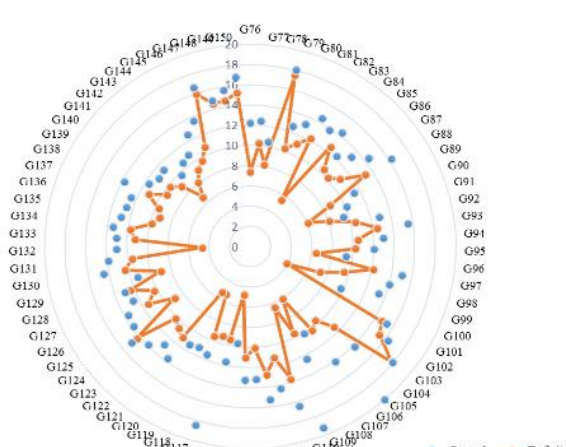


Fig. 1b: Root length of wheat genotypes 76-150.

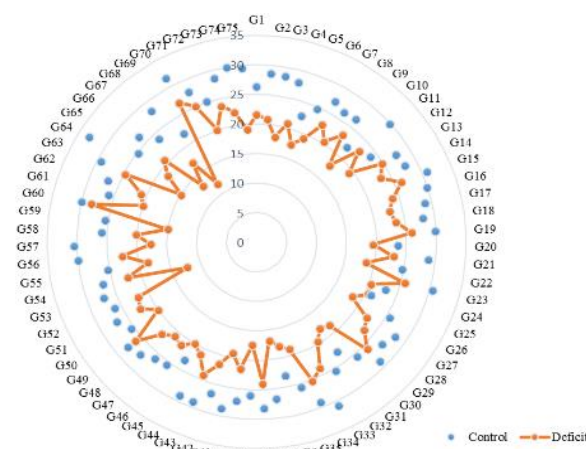


Fig. 2a: Shoot length of wheat genotypes 1-75.

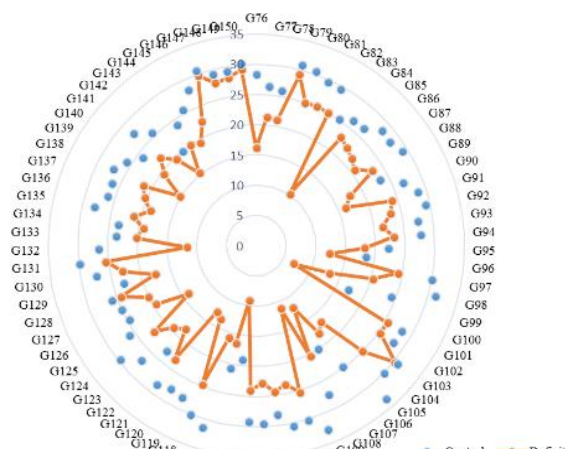


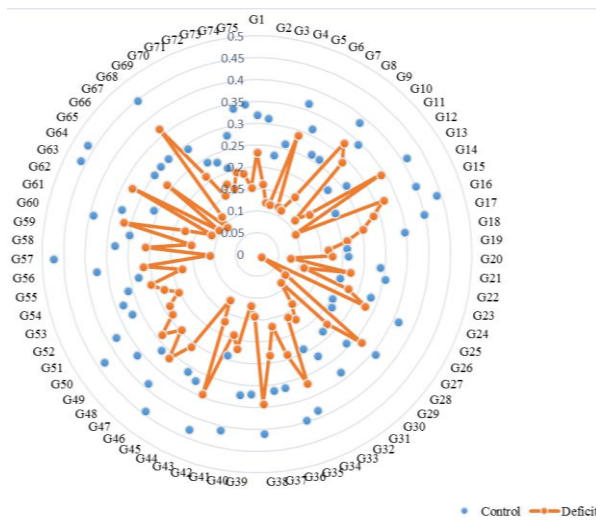
Fig. 2b: Shoot length of wheat genotypes 76-150.

**Table 1:** Mean squares for 150 wheat genotypes sown under normal and stress (drought) conditions for various seedling traits

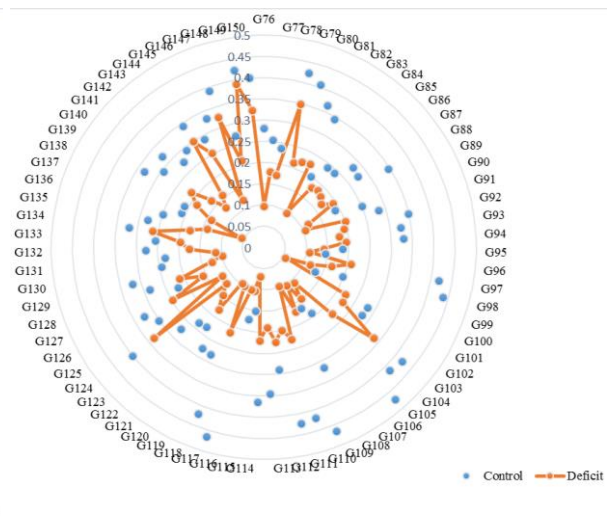
Characters	Genotype (df=149)	Environment (df=1)	G×E (df=149)	Error (df=600)
Root length	25.87522**	2426.272**	6.8251**	1.6736
Shoot length	62.1618**	8990.681**	18.6486**	2.780439
Shoot fresh weight	0.028653**	3.3218**	0.007092**	0.000049
Shoot dry weight	0.00665**	0.08726**	0.000282**	0.0000421
Root shoot ratio	0.02179**	0.000373 <sup>NS</sup>	0.007242 <sup>NS</sup>	0.004962

\*\*highly significant, \* significant, <sup>NS</sup> non-significant.

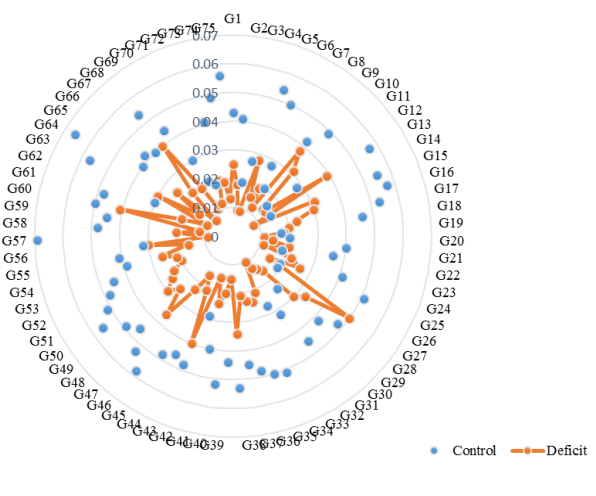
Genotype 9507 showed maximum fresh shoot weight (0.473g) followed by faislabad-08 (0.473g) and 9633 (0.466g) and minimum fresh weight as obtained by AS-02 (0.132g) under normal conditions but under drought conditions maximum and minimum shoot fresh weight of 0.39g and 0.056g was obtained by genotypes 9859 and AS-02, respectively (Fig. 3a; Fig. 1b). Similarly, to shoot fresh weight, in case of shoot dry weight under normal condition, genotype 9507 and Faisalabad-08 gained the maximum weight of both 0.069, followed by 9633 (0.066g), sehar-06 (0.066g) and lasani-08 (0.062g). Shoot dry weight under drought condition decreased significantly and ranged 0.045 to 0.003g for genotypes 9859 and AS-02, respectively (Fig. 4a; Fig. 4b). Under both the sowing conditions, genotypes showed different results for all the traits i.e., showed decreased performance under drought condition as compared to normal and percentage decrease was 23.64% for root length, 23.14% for shoot length, 38.96% for shoot dry weight and 51.08% for shoot dry weight (Fig. 5).



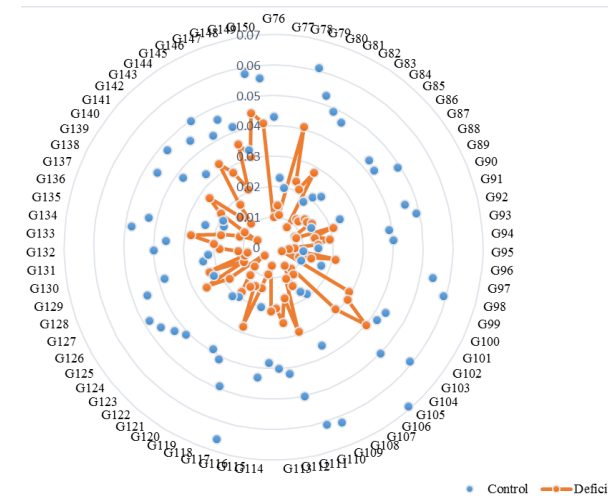
**Fig. 3a:** Fresh shoot weight of wheat genotypes 1-75



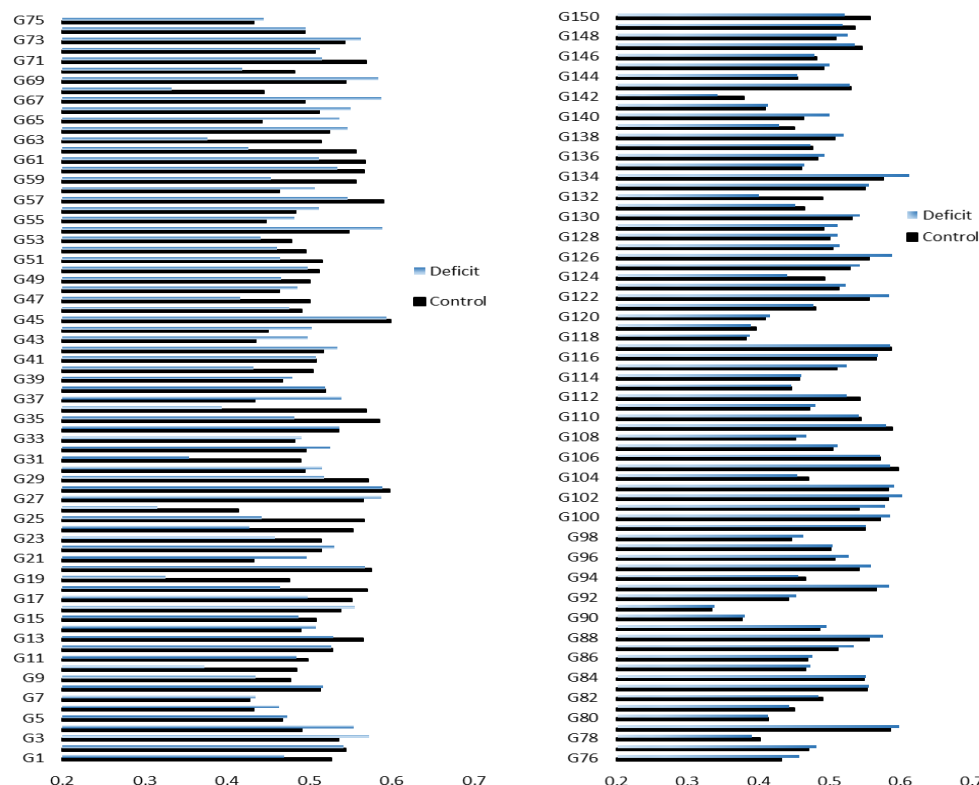
**Fig. 3b:** Fresh shoot weight of wheat genotypes 76-150



**Fig. 4a:** Dry shoot weight of wheat genotypes 1-75



**Fig. 4b:** Dry shoot weight of wheat genotypes 76-150



**Fig 5:** Left=Root shoot ratio under normal condition; Right=Root shoot ratio under drought condition.

Correlation analysis was also applied on the data to access the kind and extent of association among the seedling traits. Under normal sowing condition, length, fresh and dry weight of shoot and root shoot ration exhibited constructive and highly significant correlation coefficient. Length of shoot was positive and highly significant with shoot’s fresh weight and shoot’s dry weight while had destructive correlation with root shoot ratio. Relationship between fresh and shoot weight was positive and highly significant but only positive with root shoot ratio. Root shoot ratio and shoot dry weight were positive and non-significantly correlated with each other.

**Table 2:** Correlation coefficients among seedling traits for fifty wheat genotypes under non-stress (normal) condition

Characters	Root length	Shoot length	Shoot fresh weight	Shoot dry weight
Shoot length	0.695**			
Shoot fresh weight	0.466**	0.538**		
Shoot dry weight	0.366**	0.387**	0.893**	
Root shoot ratio	0.651**	-0.089 <sup>NS</sup>	0.069 <sup>NS</sup>	0.087 <sup>NS</sup>

\*\*highly significant, \* significant, <sup>NS</sup> non-significant

**Table 3:** Correlation coefficients among seedling traits for fifty wheat genotypes under stress (drought) condition

Characters	Root length	Shoot length	Shoot fresh weight	Shoot dry weight
Shoot length	0.801**			
Shoot fresh weight	0.445**	0.533**		
Shoot dry weight	0.423**	0.517**	0.782**	
Root shoot ratio	0.477**	-0.87 <sup>NS</sup>	0.029 <sup>NS</sup>	0.029 <sup>NS</sup>

\*\*highly significant, \* significant, <sup>NS</sup> non-significant

Similar type of association amid the seedling traits was found under drought (stress) conditions. Root’s length was high positive significant correlation with shoot’s length, fresh and dry weight of shoot and root soot ratio. Similarly, shoot’s length was positive and significantly correlated with fresh and dry shoot’s weight but showed negative non-significant correlation with root to shoot ratio. Fresh weight’s correlation with shoot dry weight was positive and highly significant but negatively non-significant. Shoot dry weight and root shoot ratio had negative and non-significant correlation among them.

Many biotic and abiotic stresses resentfully affect the crop yield and most prominent is drought which causes considerable decrease in wheat yield by reducing the production of crop. Drought causes misbalancing of nutrients and reduces efficiency of water usage and results in the synthesis and accumulation of ABA (Abscisic acid). Keeping in mind the factors of increasing world population and diminishing water resources, it is necessity of time to find a better way to conserve water on one hand and feed people by maintaining wheat yield on the other hand. In current study, seedling traits selected in different genotypes were showed different response under normal and drought conditions as mean squares for genotypes were significant. These results are in support with those results found by Singh et al. (2008), Bayoumi et al. (2008), Ahmad et al. (2013) and Baloch et al. (2012). When plant is exposed to stress, it tries to overcome the stress by adopting different strategies like extending root system to reach the deep soil water (Khan et al. 2004). Increase in stress causes reduction in both root and shoot length (Agnihotri et al. 2007; Kaydam and Yagmur 2008; Ahmad et al. 2013; Rosero et al. 2020). This reduction may be because of some hormonal imbalance or reduced division of cells in root and shoot (Sharp and Davis, 1985; Misra 1990; Raziuddin et al. 2010; Khakwani et al. 2011; Khadka et al. 2020a). Trait that is compulsory for the survival under drought is the growth of roots (Misra 1990; Dhanda et al. 2004; Wadzingeni et al. 2016; Sallam et al. 2019). Genotypes named Faisalabad-08, Sehar-06, 9633, 9507 and lasani-08 showed maximum and high root length under normal conditions but their root length decreased drastically when exposed to drought environment. Because of their behavior they are tagged as drought susceptible genotypes. Genotypes Chakwal-86, Ass-11, Manthar-2003, Miraj 2008, Chakwal-50, 9488, 9805, 9859, 9512 and 9637 showed high values for root length under drought condition and while comparing their performance under both the environments i.e. normal and drought, their root length decreased non-significantly. So these genotypes are tagged as drought tolerant genotypes. It is recommended to conduct further research on the basis of above discussed study so that this evaluated germplasm could be utilized in creation of new germplasm. Crossing drought tolerant with susceptible e.g., in line x tester fashion will generate more variation and chances of hunting such strains that can withhold drought stress.

**Conclusion:** Above discussed results clearly mentioned the importance of seeding traits in determining the drought tolerance ability of wheat genotypes. Selection through seedling traits provided efficient and cost-effective selection method and saves a lot of resources, Further, breeding material evaluated in current study could be utilized in future breeding programs for development of drought tolerant wheat genotypes.

**Author's Contribution:** Research project was conducted by MOF whereas MK supervised and coordinated the research project.

## ORCID

Muhammad Omer Farooq <https://orcid.org/0000-0001-8313-0334>

## REFERENCES

- Agnihotri RK, Palni LMS and Pandey DK, 2007. Germination and seedling growth under moisture stress, screening of landraces of rice (*Oryza sativa* L.) from Kumaun region of Indian central Himalaya. *Journal of Plant Biology* 34: 21-27.
- Ahmad M, Shabbir G, Minhas NM and Shah MKN, 2013. Identification of Drought Tolerant Wheat Genotypes Based Approach. 3rd Ed. McGraw Hill Book Co, New York.
- Ahmad NS, Kareem SHS, Mustafa KM and Ahmad DA, 2017. Early screening of some Kurdistan wheat (*Triticum aestivum* L.) cultivars under drought stress. *Journal of Agricultural Science* 9: 88-103. <https://doi.org/10.5539/jas.v9n2p88>
- Ahmed HGM, Zeng Y, Yang X, Anwaar HA, Mansha MZ, Hanif CMS, Ikram K, Ullah A, Alghanem SMS, 2020. Conferring drought-tolerant wheat genotypes through morpho-physiological and chlorophyll indices at seedling stage. *Saudi Journal of Biological Sciences* 27: 2116-2123. <https://doi.org/10.1016/j.sjbs.2020.06.019>
- Aroca R, 2012. Plant Responses to Drought Stress - From Morphological to Molecular Features. Springer, New York, pp: 1-5.
- Aziz I, Khan AA, Noorka IR and Tabasum A, 2011. Germination percentage a marker for the selection among diverse genotypes of tomato (*Lycopersicon esculentum* Mill.). *International Journal of Agriculture and Applied Sciences* 3: 18-20.
- Baloch MJ, Dunwell J, Khakwani AA, Dennett M, Jatoi WA and Channa SA, 2012. Assessment of wheat cultivars for drought tolerance via osmotic stress imposed at early seedling growth stages. *Journal of Agricultural Research* 50: 299-310.
- Bayoumi TY, Eid MH and Metwali EM, 2008. Application of physiological and biochemical indices as a screening. *Biotechnology* 6: 971-975.
- Chowdhry MA, Rasool I, Khaliq I, Mehmood T and Gilliani MM, 1999. Genetics of some metric traits in spring wheat under normal and drought environments. *Rachis Interventional* 18: 34-39.
- Datta JK, Mondal T, Banerjee A and Mondal NK, 2011. Assessment of drought tolerance of selected wheat cultivars under laboratory condition. *Journal of Agricultural Technology* 7: 383-393.
- Dhanda SS, Sethi GS and Behl RK, 2004. Indices of drought tolerance in wheat genotypes at early stages of plant growth. *Journal of Agronomy and Crop Sciences* 19: 6-8.
- Dixon J, Braun HJ, Kosina PP and Crouch J, 2009. Wheat facts and futures. CIMMYT, Mexico.

- FAO. 2014. <http://faostat.fao.org/site/609/DesktopDefault.aspx?PageID=609#ancor>.
- Farooq, Khaliq I, Khan AS and Pervez MA, 2010. Studying the genetic mechanism of some yield contributing traits in wheat (*Triticum aestivum*). International Journal of Agriculture and Biology. 12: 241-246.
- Farooq MH, Bramley H, Palta JA and Siddique KHM, 2011. Heat stress in wheat during reproductive and grain filling phases. Critical Reviews in Plant Sciences 30: 491-507.
- Kaydam D and Yagmur M, 2008. Germination, seedling growth and relative water content of shoot in different seed sizes of triticale under osmotic stress of water and NaCl. African Journal of Biotechnology 7: 2862-2868.
- Khadka K, Earl HJ, Raizada MN, Navabi A, 2020a. A physio-morphological trait-based approach for breeding drought tolerant wheat. Frontiers in Plant Science 11: 715. <https://doi.org/10.3389/fpls.2020.00715>
- Khadka K, Raizada MN and Navabi A, 2020b. Recent progress in germplasm evaluation and gene mapping to enable breeding of drought-tolerant wheat. Frontiers in Plant Science 11: 1149. <https://doi.org/10.3389/fpls.2020.01149>
- Khakwani AA, Dennett MD and Munir M, 2011. Early growth response of six wheat varieties under artificial osmotic stress condition. Pakistan Journal of Agricultural Sciences 48: 118-123.
- Khan IA, Habib S, Sadaqat SH and Tahir MHN, 2004. Selection criteria based on seedling growth parameters in maize varies under normal and water stress conditions. International Journal of Agriculture and Biology 6: 252-256.
- Lambers H, Chapin FS and Pons TL, 2008. Plant Physiological Ecology, 2nd Ed. Springer, New York.
- Li YP, Ye W, Wang M and Yan XD, 2009. Climate change and drought: a risk assessment of crop yield impacts. Climate Research 39: 31-46.
- Misra AN, 1990. Seedling vigour and prediction of drought resistance in pearl millet genotypes (*Pennisetum americanum* L., Leeke). Beitr Tropisch Landwirtschaft Veterinarmedizin 28: 155-159.
- Misra AN, Biswal AK and Misra M, 2002. Physiological, biochemical and molecular aspects of water stress responses in plants and the biotechnological applications. Proceedings of Indian National Science 72: 115-134.
- Nezhadahmadi A, Prohdan ZH and Faruq G, 2013. Drought tolerance in wheat. The Scientific World Journal 2013: Article ID 610721. <https://doi.org/10.1155/2013/610721>
- Noorka IR and Khaliq I, 2007. An efficient technique for screening wheat (*Triticum aestivum* L.) germplasm for drought tolerance. Pakistan Journal of Botany 39: 1539-1546.
- Noorka IR and Pat Heslop-Harrison JS, 2013. Hazards minimizing risk, maximizing awareness to check environmental effects for wheat maximization in Pakistan. Climate Change Outlook and Adaptation 1: 9-13.
- Pearson K, 1920. Notes on the history of correlation. Biometrika 13: 25-45.
- Rajaram S, 2001. Prospects and promise of wheat breeding in the 21st century. Euphytica 119: 3-15.
- Rashidi M and Seyfl K, 2007. Effect of water stress on crop yield and yield components of cantaloupe. International journal of Agricultural Biology 9: 271-273.
- Raziuddin SZA, Bakht J, Farhatullah NU, Shafi M, Akmal M and Hassan G, 2010. In situ assessment of morpho-physiological responses of wheat (*Triticum aestivum* L.) genotypes to drought. Pakistan Journal of Botany 42: 3183-3195.
- Rosero A, Granda L, Berdugo-Cely JA, Šamajová O, Šamaj J and Cerkal R, 2020. A dual strategy of breeding for drought tolerance and introducing drought-tolerant, underutilized crops into production systems to enhance their resilience to water deficiency. Plants 9: 1263. <https://doi.org/10.3390/plants9101263>
- Saint PC, Crossa JL, Bonnett D, Yamaguchi SK and Reynolds MP, 2012. Phenotyping transgenic wheat for drought resistance. Journal of Experimental Botany 63: 1799-1808.
- Shahbazi H, Bihanta MR, Taeb M and Darvish F, 2012. Germination characters of wheat under osmotic stress: Heritability and relation with drought tolerance. International journal of Agriculture Research Review 2: 689-698.
- Sharp RE and Davis WJ, 1985. Root growth and water uptake by maize plants in drying soil. Journal of Experimental Botany 36: 1441-1456.
- Sallam A, Alqudah AM, Dawood MFA, Baenziger PS and Börner A, 2019. Drought Stress tolerance in wheat and barley: Advances in physiology, breeding and genetics research. International Journal of Molecular Sciences 20: 3137. <https://doi.org/10.3390/ijms20133137>
- Singh GP, Chaudhary HB, Rajbir Y and Tripathi S, 2008. Genetic analysis of moisture stress tolerance in segregating populations of bread wheat (*T. aestivum* L.). Indian Journal of Agriculture Sciences 78: 848-852.
- Steel RGD, Torrie JH and Dickey DA, 1997. Principles and Procedures of Statistics: A Biometrical Approach, 3rd Ed. McGraw Hill Book Co, New York.
- Rasool I, 2008. Physio-genetic basis of water stress tolerance in spring wheat (*Triticum aestivum* L. em. Thell). PhD thesis, University of Agriculture, Faisalabad, Pakistan.
- Wadzingeni L, Shimelis H, Tesfay S and Tsilo TJ, 2016. Screening of bread wheat genotypes for drought tolerance using phenotypic and proline analyses. Frontiers in Plant Science 7: 1276. <https://doi.org/10.3389/fpls.2016.01276>
- Waqas M, Noorka IR, Khan AS and Tahir MA, 2013. Heritable variations the base of effective selection in wheat (*Triticum aestivum* L.) to ensure food security. Climate Change Outlook and Adaptation 1: 14-18.